

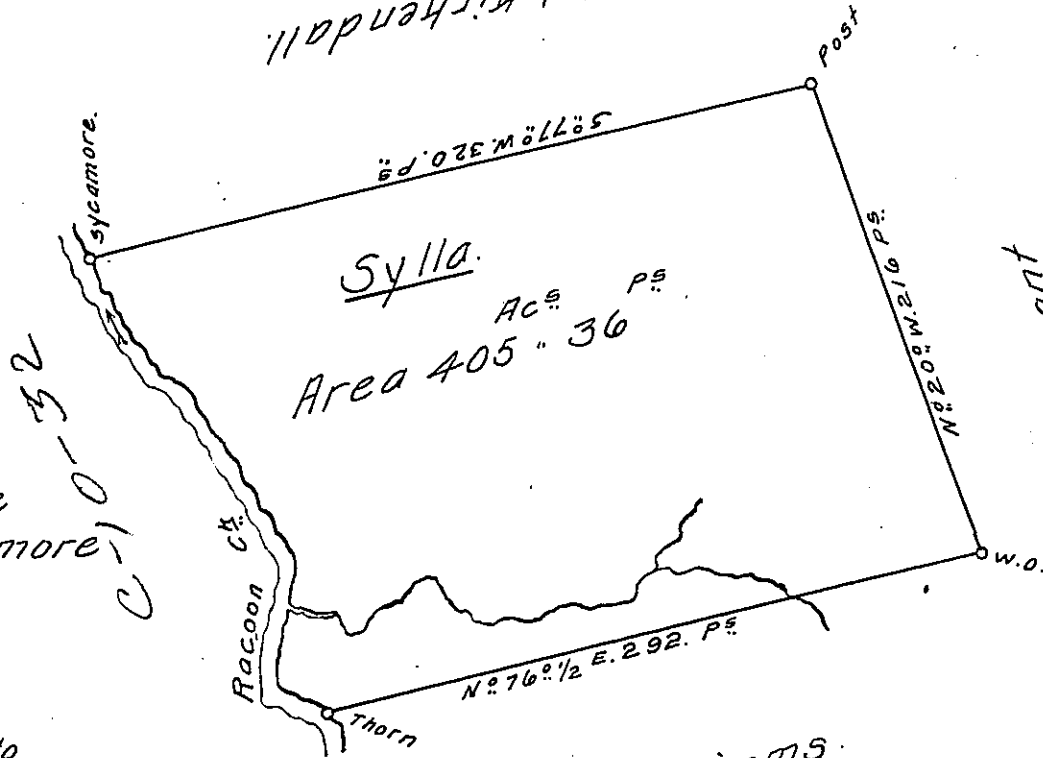
Hopewell & Indep^{ce}

BEAVER ✓

1785-1800

3-4-5

C 102-204
Nathaniel Kir Kendall



No Patent
D 38-222
No Use
A-7-188

Courses up the Cr from y^e Sycamore

- 1 S 29° E. 55 P.
 - 1 S 60° E. 20 D.
 - 1 S 30° E. 8 1/2 D.
 - 1 S 8° W. 59 D.
 - 1 S 64° E. 28 D. to the Thorn
- 243 1/2

Charles Simms

A Draught of a Survey called Sylla lying on Raccoon Cr. in Washington County. cont^d. 405 Ac^s 36 P^s strict Measure. executed March 1st 1786 in Consequence of a Certificate granted to Benj^d. Kir Kendall for 400 Ac^s. by the Commiss^{rs} appointed by Virg^a to adjust the Claims to unpatented Lands in the Counties of Monong^a Yohg^a & Ohio and duly entered with y^e County Surv^r as appears from the List transmitted from y^e Surv^r Gen^{ls} Office.

Ret^d 8th Sept. 1786

Ent^d 28th Dec^r. 1779

Presley Nevill } D. Surv^s
& Matt^w Ritchie }

Jn^o Lukens Esq^r S. G. }

IN TESTIMONY that the above is a copy of the original remaining on file in the Department of Internal Affairs of Pennsylvania, made conformably to an Act of Assembly approved the 16th day of February, 1833, I have hereunto set my Hand and caused the Seal of said Department to be affixed at Harrisburg, this first day of March 1912.

Henry Howell

Secretary of Internal Affairs.